



February 2023 NEWSLETTER

Achieving and flourishing in our Christian Community



Dear Parents & Carers

This is an exciting letter for me to write, as it is my first as Headteacher of Collaton St Mary Primary School. Thank you to all those who have wished me well in my new role; I genuinely feel privileged to lead such an incredible team of staff and to be a part of such an amazing school family.

As we approach half term, it's hard to believe we are half way through the academic year; it is so lovely to walk around the school and see the children so settled in their classes and their learning.

Three classes have been able to attend sports festivals hosted by Paignton College. The children take part in events with other local primary schools and it is always a valuable experience for them. We have also had the Bikeability sessions for year 3 and 4, which were really popular and a positive introduction to the Bikeability scheme.

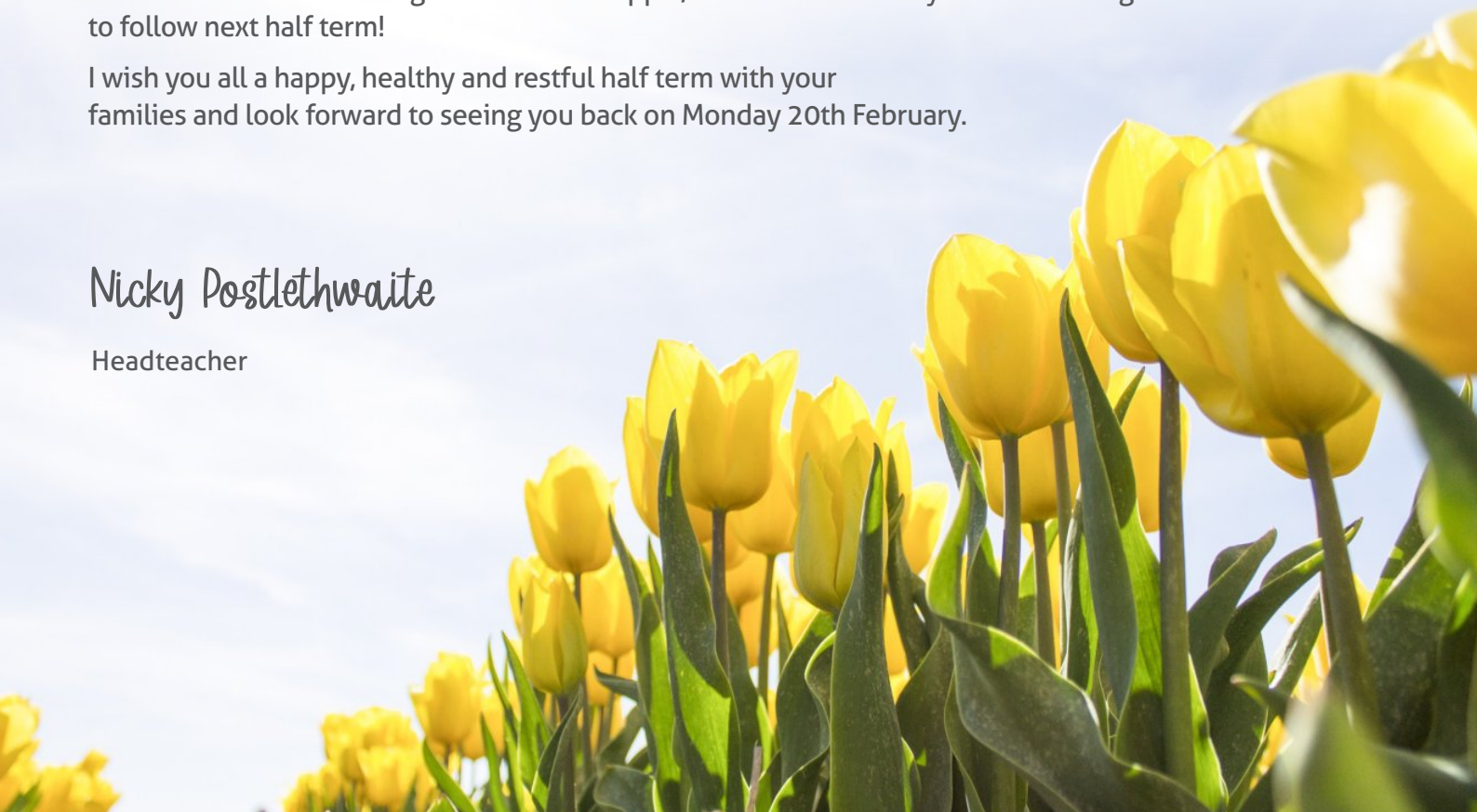
This half term there have been Geography and Narrative learning experiences across the school and it has been great to see the children engaged and enthusiastic. We have been concentrating on the character gateway of Explorers and have focused on the traits of Aspiration and Resilience. These traits have been at the heart of our weekly worship times and the children have worked hard to demonstrate and recognise these within their learning.

Over the next half term we will moving into the period of Lent in the build up to Easter. We will see a change in the season and more opportunities to explore outdoor learning as the weather improves. I also look forward to introducing the 'Collaton Cuppa'; our new community coffee mornings- more information to follow next half term!

I wish you all a happy, healthy and restful half term with your families and look forward to seeing you back on Monday 20th February.

Nicky Postlethwaite

Headteacher



Year R



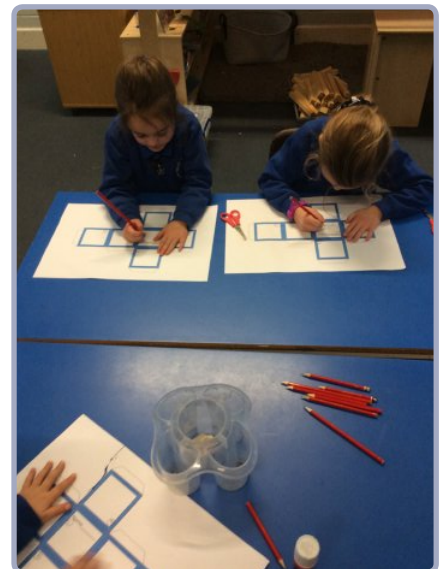
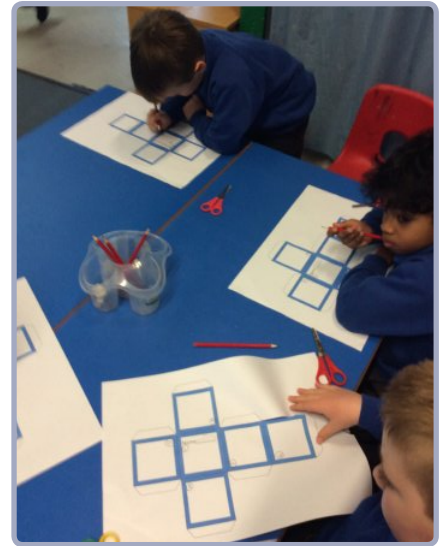
During the first part of this half-term, Reception were working on the learning experience 'Where do my feet take me?' We all really enjoyed using the book '*Rosie's Walk*' to think about the different journeys that we go on. The children have learnt how to read maps and even created their own ones that they then used around the school grounds in the snow! The children have also been completing a narrative learning experience based around The 3 Little Pigs this half-term. They have really enjoyed learning the story and using the vocabulary themselves when retelling it using stick puppets or figures. They have also loved using the various construction resources to build their own houses for the 3 Little Pigs, houses that the wolf would not be able to blow down!



Year 1

Learning Experience

This term we have been looking at our local area as part of our Geography learning experience. We have been trying to answer the question 'How is Collaton special?'. We have been looking at where we live on Google Earth and using maps. We have learnt what physical and human features are. We then went on a class walk around Geography to see which human and physical features we have in our local area. We have also learnt about Paignton and looked at what is similar and what is different between Collaton and Paignton.



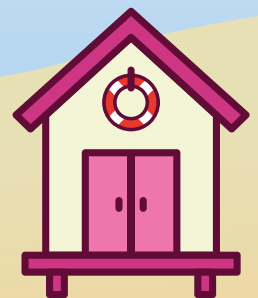
RE

During RE, we have been looking at the parable of 'the lost son' from the Bible. The children have learnt that a parable is a story with a hidden meaning within it. To demonstrate this, we made hidden meaning boxes. The children drew pictures of the story around the outside, made this into a box and then wrote a hidden meaning for somebody to find inside the box!

Year 2

In our geography learning experience, we asked the question 'why do people come on holiday to Paignton?' We live in a beautiful area. How lucky are we!

In art, we drew the colourful beach huts that line our beautiful coast line.



Year 3

Last term, Year 3 learned all about recycling and, as part of their homework, they were asked to create posters to encourage local businesses to think about the way they recycle in their offices.

Greenlight Mortgages selected Madison's poster to display in their office and thanks to the effort from our class, they are now recycling in their offices. What a great impact they have made!



Year 4

This half term Year 4 have been studying Barcelona. We learnt how to use atlases, Google Earth and maps to find places and landmarks. We also conducted research on the city of Barcelona, finding out about its climate, attractions, famous foods and much more. We then used this information to create travel brochures persuading people to visit the city.

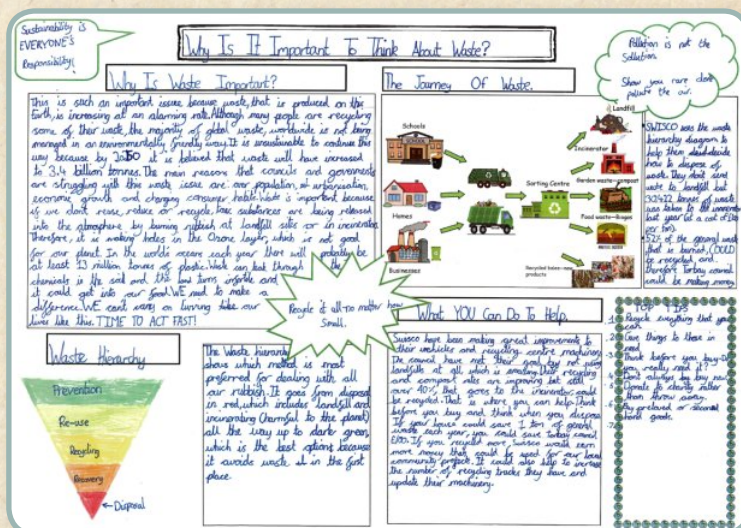


SUSTAINABILITY AND RECYCLING OUTCOME



Year 5

The Year 5 pupils worked really hard to produce informative posters explaining why it is important to think about waste. They showed their understanding of the global problem of how much waste humans produce and how the waste hierarchy works. They went on to show how SWISCO collect and sort the different items and what is recycled and what is sent to the incinerator. Finally they gave some Top Tips on waste reduction to help our local community to make better choices.



WORKING TOGETHER

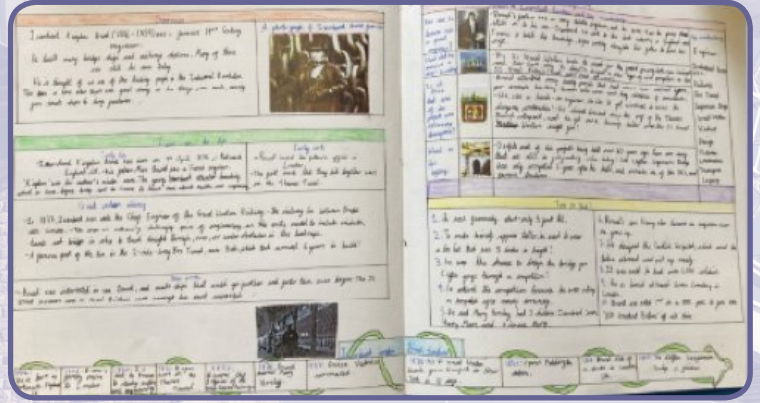
The class have been working collaboratively in their learning. They have learned how to listen respectfully and challenge each other to think more deeply. Here, they are sequencing the animated story 'The Lighthouse'.



Year
6

What impact did Isambard Kingdom Brunel have on the South West of England?

Year 6 have been learning about how the engineering genius of Isambard Kingdom Brunel enabled the people of the South West to become connected to the rest of the country. They have learned in-depth about the obstacles that Brunel encountered during the construction of the Great Western Railway and how his ingenuity overcame them all. Ultimately, they will write a report to share their findings.



Catch Theatre Alibi's 'The Parcel' at Paignton Library to kick off February half-term!



A giant mysterious parcel has just arrived at Paignton Library and, as if that isn't exciting enough, it soon becomes clear that two people live inside it! They travel around the world, deciding where to go by placing their finger on a map and posting themselves there. They have breath-taking stories to share of magnificent travels, friendships made and the many marvels of the postal service. But how did they come to live in this parcel? Why have they

posted themselves here? And where are they off to next?

Come along and meet this intriguing pair, they'll even show you around their astonishing little home. From the outside it may look like a regular package, but once opened it transforms into something quite wondrous, and full of surprises...

Enjoy a half term treat with your family and/or the small people in your life this February. Performance Dates: Saturday 11th February 11am & 2.30pm

Tickets are £7.50/£5 + booking fee, and can be booked here: www.theatrealibi.co.uk/prouduction/the-parcel/

For 5-11-year-olds

Online Safety & Gaming

Gaming refers to playing electronic games, whether through consoles, computers, tablets, smartphones or other devices. Gaming remains one of the most popular forms of entertainment, attracting a wide range of age groups from all across the world. Gaming is always looking to develop, often improving on graphical features, accessibility and user engagement as years go by.

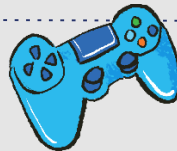


Unlike many other forms of media, gaming brings a sense of challenge to the player. Usually there is a degree of skill involved that players need to develop in order to progress. Depending on the type of game, it can also offer players a platform where they can be imaginative and explore their own creativity.

Some games have rich storylines and characters that are engaging and memorable. Many players also use it as an opportunity to compete and socialise with other users whether it be in person or online. More often than not though, people game, because it is fun!

Benefits of Gaming

- 1 Can develop critical and creative skills
- 2 Can bring educational benefit and awareness
- 3 Is available to most audiences and family members
- 4 Is an easy and accessible way to socialise with others



Considerations for Gaming

- 1 Have awareness of appropriate age restrictions
- 2 Parental awareness around purchasing
- 3 Active discussions around socialising safely
- 4 Reporting harmful or offensive content online

Socialising Online

A staple of gaming is the community that surrounds it. Groups and audiences can gather around a specific game, character or theme to build specific fan bases that can interact with each other. Young people may like to socialise online because:

- 1 It gives them a platform to be with friends outside of school
- 2 There is usually a competitive element at play, which can feel rewarding
- 3 It can build confidence and social skills which may not be attainable physically
- 4 It gives opportunity to young people who have difficulty socialising with friends and others



Reporting and Blocking

Gaming communities can range from supportive and educational, to toxic and harmful. In some instances, it can even lead towards more radical content being promoted. When faced with something or someone being harmful online, make sure young people know how to:

- 1 Report the player or piece of content
- 2 Mute or block the player
- 3 Manage their privacy settings or communication options
- 4 Speak with a trusted adult for support



To find out more about Gaming visit the SWGfL hub:
swgfl.org.uk/topics/gaming/

or scan the QR code



Further Support

Professionals Online Safety Helpline: saferinternet.org.uk/professionals-online-safety-helpline

Harmful Sexual Behaviour Support Service: swgfl.org.uk/harmful-sexual-behaviour-support-service/

Report Harmful Content:
reportharmfulcontent.com



Collaton St Mary Primary School

Diary Dates

2022

Monday 13th Feb – Friday 17th Feb

Wednesday 15th February

Monday 20th February

Wed 22nd February

Monday 27th February

Thursday 2nd March

Monday 6th March

Friday 17th March

Monday 20th March

Thursday 23rd March

Monday 27th March

Monday 3rd April – Friday 14th April

Sunday 30th April

Monday 1st May

Monday 8th May

Wednesday 17th May

Monday 29th May – Wednesday 7th June

Tuesday 13th June

Tuesday 20th June

Tuesday 27th June

Monday 3rd July – Wednesday 5th July

Thursday 6th July & Friday 7th July

Wednesday 26th July – Tuesday 5th Sep

Half Term Break

Ash Wednesday

Year 3 Swimming
Parents Evening

Parents Evening

Year 3 Swimming

World Book Day

Year 3 Swimming

Red Nose Day

Year 3 Swimming

Year 3 Class Led Worship

Year 3 Swimming

Easter Break

Easter Family Service

Bank Holiday

Bank Holiday

Year 5 School Trip

Half Term Break

Class Photos

Sports Day

Reserve Sports Day

Year 6 Residential

Year 6 Transition days at secondary schools

Summer Holidays

POPPY APPEAL

Thank you to
parents and carers.

Your support raised
£173.70 for The
Royal British Legion.